



SOCIOLOGY

STEP UP TO SIXTH FORM



KEY INFO:

Faculty: Creative and Social
Course Title: A-level Sociology
Exam Board: AQA
Course Textbook: AQA A Level Sociology Book One & AQA A Level Sociology Book Two By Robert Webb, published by Napier press.



ACTIVITIES:

Using TV, radio, newspapers, internet, magazines etc. look for **research studies** that have been **recently published** on one of the following subjects:

- *Social class*
- *Inequality in education*
- *Childhood*
- *Government policy on crime*
- *Crime rates*
- *Gender and education*
- *Gender and employment*
- *Changing relationships*
- *Gender stereotypes*
- *Religion and society*

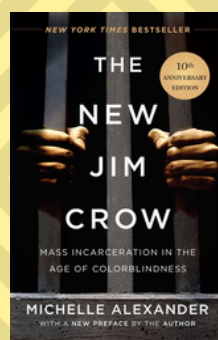
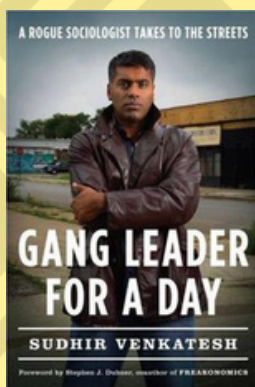


Write a **short review** describing what has been found, how the research was conducted, what problems you can spot in the method used for the research and then consider why you might agree or disagree with the findings.

← WIDER READING:

Plus...

- *Miseducation: Inequality, Education and the Working Classes* by Diane Reay
- *Chavs* by Owen Jones



USEFUL ONLINE LINKS:

Visit the British Sociological Association website <https://www.britisoc.co.uk/> and using the 'what is sociology tab' research what sociology is all about, how research is carried out and the study and career opportunities that Sociology leads to.

Read all about influential sociologists who have shaped how we understand society and our role within it by reading the sociologist profiles on <https://www.thoughtco.com/famous-sociologists-3026648>

Get a head start on sociological theory by reading the overviews of sociological perspectives here: <https://www.thoughtco.com/theoretical-perspectives-3026716>

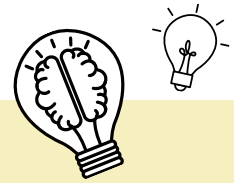
Listen to the excellent TED talk from sociologist Alice Goffman on how society prepares some for university and others for prison, and what her research in tough inner city Philadelphia showed. https://www.ted.com/speakers/alice_goffman

Read the article: <https://ideas.ted.com/the-unintended-consequences-of-being-tough-on-crime/> and write down your views, should government policy on crime be punishment focused or rehabilitation and community improvement focused? Justify your decisions!

Explore TED talks on social inequality, what is it, why does it happen and what are its consequences? <https://blog.ted.com/playlist-the-roots-and-effects-of-income-equality/>

The websites below will give you an insight into specific areas of study and the skills you'll need to develop to ace your Sociology A level:

- <https://www.theguardian.com/education>
- www.emmanuel sociology.wordpress.com
- <https://www.youtube.com/user/TheTEACHERSOCIOLOGY>



PODCASTS:

30 minute podcasts about all things sociology related: www.anchor.fm/allsociology

Podcasts from leading social scientists on issues facing the world: www.socialsciencespace.com/author/socialsciencebites

Podcast from a leading sociology academic journal: <https://soundcloud.com/thesociologicalreview>

Interviews with some of the key scholars whose research you will study: <https://www.listennotes.com/podcasts/the-sociology-show-matthew-wilkin--EujCyzDmkA/>

TV AND FILM:

- Film: Made in Dagenham (A story of how women fought for equal pay for equal work in the UK)
- Film: I, Daniel Blake (Poverty, social class and inequality)
- Film: City of God (Crime, ethnicity, social class and inequality)
- Film: The Wife (Gender, power, identity and feminism)
- Film: The Green Mile (Crime, ethnicity and social stereotyping)

On Netflix:

- Girls Incarcerated (Gender and crime)
- Dirty Money (capitalism, Marxism, social policy, globalisation and crime)
- Flint Town (state crime, green crime, punishment, globalisation and crime)
- BBC and Channel 4: Panorama (BBC) and Dispatches (Ch4) often focus on issues relating to Sociology

For further information please contact the Sixth Form team (P16@emmanuel.nottingham.sch.uk) who will be happy to forward your email to the relevant department.